



NEXT renew

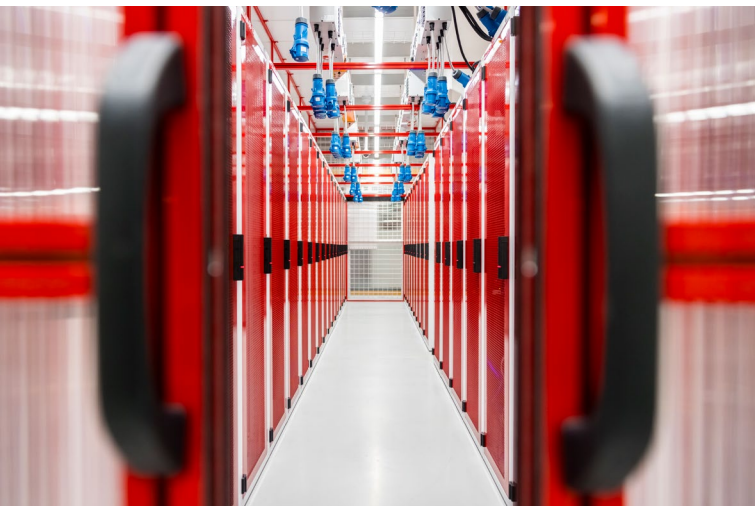
Renewable energy matching
for digital infrastructure



Match your digital operations with Government-certified renewable energy

NEXTrenew enables customers using NEXTDC's power on consumption model to match their energy consumption in our Australian facilities with Large-scale Generation Certificates (LGCs) issued under the [Australian Government's Renewable Energy Target scheme](#).

It provides a future-ready transparent and auditable pathway to align your digital operations with certified renewable generation without compromising performance or reliability.



What is NEXTrenew

NEXTrenew matches your measured IT energy consumption – adjusted for facility Power Usage Effectiveness (PUE) – with government-certified renewable energy certificates supporting solar, wind and hydro generation.

Aligned with your existing Power Pass Through billing model, it brings clarity to the relationship between energy consumption and renewable supply, enabling informed sustainability decision-making.

Why it matters

As digital infrastructure scales through AI adoption, higher-density workloads and geographic expansion, energy consumption grows in parallel.

NEXTrenew provides a scalable, accountable renewable matching pathway that:

- ✓ Supports your evolving sustainability and net zero ambitions
- ✓ Simplifies reporting and audit requirements
- ✓ Removes the complexity of managing renewable procurement internally

Expand your digital footprint. Stay focused on growth and innovation with confidence that renewable alignment keeps pace with your energy use.

How NEXtRenew creates value



Operational certainty

Transparent renewable matching without compromising reliability or performance.



Future readiness

Scalable renewable pathway aligned to growing digital energy demand.



Strategic advantage

Simplified reporting and credible renewable claims that strengthen market position.

How it works

1

Measure usage

Your monthly IT energy consumption is calculated.

2

Apply facility PUE

Consumption is adjusted to reflect total facility energy use.

3

Match with LGCs

The equivalent number of certificates is procured and retired on your behalf.

4

Transparent billing

Renewable matching is charged at a renewable rate reflecting market conditions.

All certificate procurement, management and reconciliation are handled by NEXtDC, reducing internal administrative burden.

What you receive



Renewable energy matching aligned to monthly usage



A simplified renewable procurement pathway under a single agreement



Transparent methodology supporting audit and reporting requirements



Documentation to strengthen sustainability disclosures and stakeholder confidence

Get started

Contact your NEXtDC Account Manager to enable renewable energy matching for your digital operations.

136 398

sales@nextdc.com

[nextdc.com](https://www.nextdc.com)



NEXtDC

where AI thrives

Important clarification: NEXtRenew is a renewable energy matching service and is distinct from carbon offset programs.

For organisations seeking offset-based carbon neutrality pathways, NEXtNeutral remains available as a complementary service.

This document is correct at the time of printing and is for presentation purposes only. This document does not constitute an offer, inducement, representation, warranty, agreement or contract. All information contained in this document (including all measurements, photographs, pictures, artist's impressions and illustrations) is indicative only and subject to change without notice. NEXtDC Limited, its employees, representatives, consultants and agents make no representations or warranties as to the accuracy, completeness, currency or relevance of any information contained in this document and accept no responsibility or liability whatsoever for any discrepancy between the information contained in this document and the actual data centres or services provided by NEXtDC Limited or for any action taken by any person, or any loss or damage suffered by any person, in reliance upon the information contained in this document. © 2026 NEXtDC Limited ABN 35 143 582 521.

NEXTRENEW_2026_250326_01